

U.S. Army Public Health Center

Army Influenza Activity Report

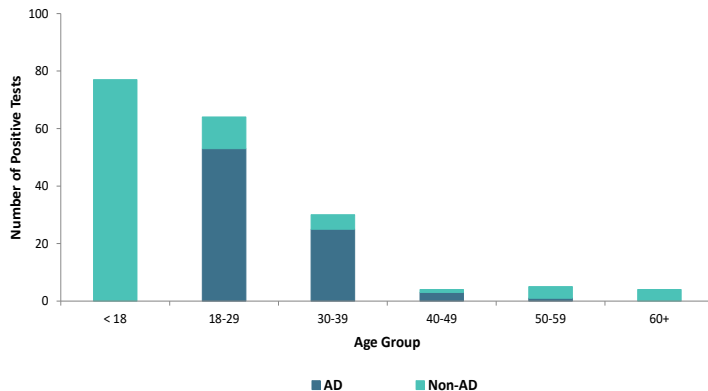
Week ending 07 May 2022 (Week 18)

SUMMARY

Influenza activity is decreasing in the Army population. Two hundred and seventy-one positive influenza A and eight influenza B specimens were reported during surveillance week 18. Two influenza-associated hospitalizations were reported in week 18; the season total thus far is twenty-six compared to four influenza-associated hospitalizations reported as of this time last season. Of the specimens that tested positive for select respiratory illnesses, among non-AD beneficiaries, 75.5% were collected from individuals younger than 18 during surveillance week 18. Among AD service members, 64.6% of positive specimens were collected from individuals 18-29 years of age. Nationwide, influenza activity has slightly increased in most areas of the country with 8.6% of specimens tested by clinical laboratories being positive for influenza A or B.

DEMOGRAPHICS

Positive Respiratory Specimen Results from Army MTFs by Age Group and Beneficiary Status, Week 18



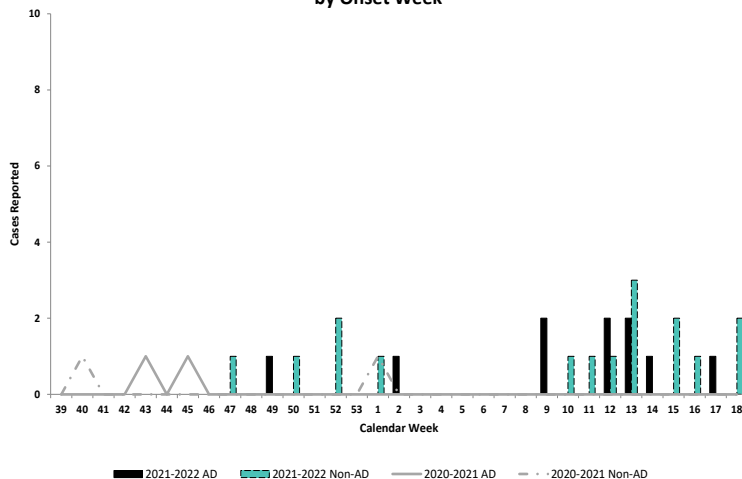
AD: Eighty-two positive respiratory specimens were collected from active-duty (AD) service members (SMs) during week 18; 64.6% (n=53) of the positive specimens were collected from SMs 18-29 years of age.

Non-AD: One hundred and two positive respiratory specimens were collected from non-AD individuals during week 18; 75.5% (n=77) of the positive specimens were collected from individuals under 18 years of age.

The age and beneficiary status of some cases were not available. Therefore, all calculations involving these variables were conducted using only available data. Differences in total results, and age- and beneficiary status-specific results may be noted throughout the report.

INFLUENZA-ASSOCIATED HOSPITALIZATIONS

Army Influenza-Associated Hospitalizations Reported in DRSi by Onset Week



Two influenza-associated hospitalizations with an onset date in week 18 were reported to the Disease Reporting System internet (DRSi); they were non-AD individuals. The season total thus far is twenty-six hospitalizations. During the 2020-2021 season, no hospitalizations were reported in week 18 (with four hospitalizations reported from the start of the season through week 18).

The DRSi does not capture cases older than 65 years old for influenza-associated hospitalizations.

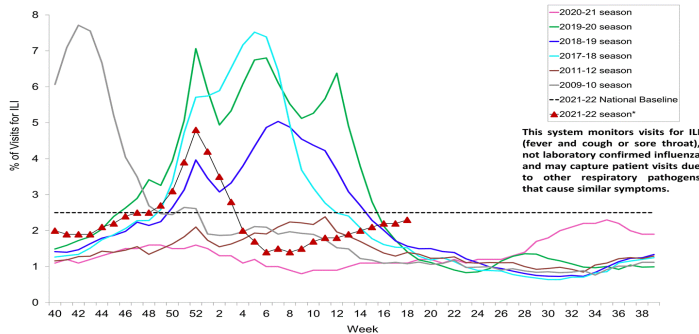
Data are preliminary and subject to change.

Questions?
Email [APHC DEP](mailto:APHC_DEP)

ILI ACTIVITY - UNITED STATES

ILI ACTIVITY - ARMY

Percentage of Outpatient Visits for Respiratory Illness Reported By The U.S. Outpatient Influenza-like Illness Surveillance Network (ILINet), Weekly National Summary, 2021-2022* and Selected Previous Seasons

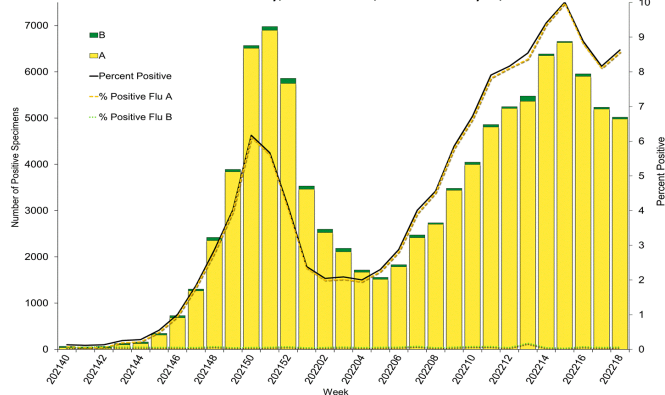


Data Unavailable

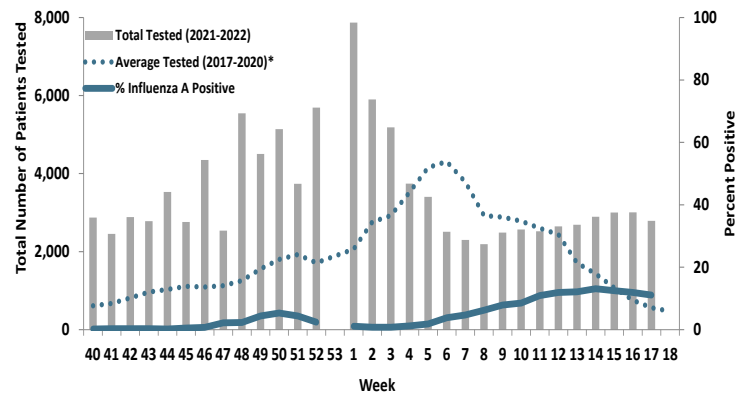
Nationwide in week 18, incident ILI activity was 2.3%; this is below the national baseline of 2.5%. At the time of publishing, incident ILI activity data for the Army population were unavailable.

LABORATORY RESPIRATORY SPECIMEN TESTING

Influenza Positive Tests Reported to CDC by U.S. Clinical Laboratories, National Summary, October 3, 2021 – May 7, 2022



Proportion of Positive Influenza A Specimens for U.S. Army 2021-2022



Nationwide during week 18, a total of 58,131 specimens were tested for influenza by select clinical laboratories and submitted to the CDC; 5,017 (8.6%) were positive. Influenza A accounted for 99.2% (n=4,979) of the total positive specimens. In the Army population, 271 (10.6%) of the 2,547 specimens tested for influenza A were positive in week 18.

Data from the 2020-2021 influenza season are not included in the Army's average tested calculation due to the unusually low incidence of influenza.

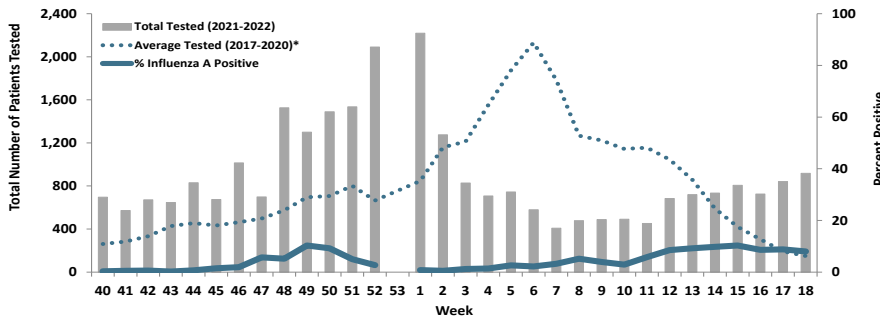
		Week 15	Week 16	Week 17	Week 18	Season Total
Army MTF Laboratory Results, 2021-22	Adenovirus	20	9	11	11	373
	Enterovirus	5	4	4	5	307
	Influenza A	375	358	355	271	4,722
	Influenza B	13	6	9	8	251
	Parainfluenza	15	20	21	21	379
	RSV	11	21	11	20	1,325
	Negative	7,546	7,614	7,528	6,641	263,897
Total	7,985	8,032	7,939	6,977	271,254	

Of the 6,977 test results for respiratory illnesses during week 18, 4.8% (n=336) were positive for any type of respiratory illness. Influenza A accounted for 80.7% (n=271), parainfluenza accounted for 6.3% (n=21), respiratory syncytial accounted for 6.0% (n=20), adenovirus accounted for 3.3% (n=11), influenza B accounted for 2.4% (n=8), and enterovirus accounted for 1.5% (n=5) of the positive results.

Locations providing week 17 laboratory data as of 03 May 2022: Carlisle Barracks, Ft. Belvoir, Ft. Benning, Ft. Bliss, Ft. Bragg, Ft. Campbell, Ft. Carson, Ft. Drum, Ft. Eustis, Ft. Gordon, Ft. Hood, Ft. Irwin, Ft. Jackson, Ft. Knox, Ft. Leavenworth, Ft. Lee, Ft. Lewis, Ft. Meade, Ft. Polk, Ft. Riley, Ft. Rucker, Ft. Sam Houston, Ft. Sill, Ft. Stewart, Ft. Wainwright, Korea, Redstone Arsenal, the U.S. Military Academy, and Walter Reed National Military Medical Center.

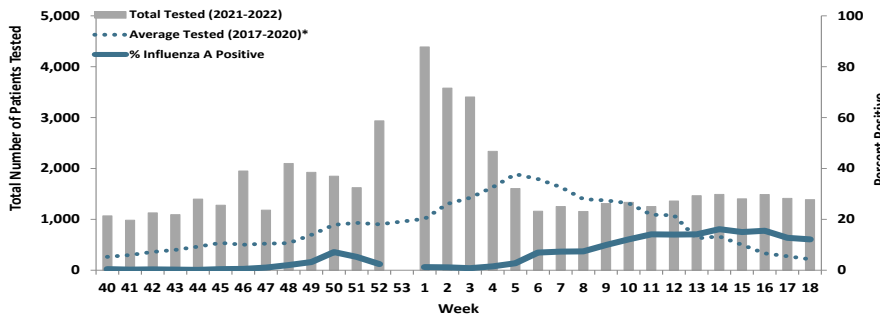
Proportion of Influenza A Positive Specimens by Week and Region, Army Medical Laboratories, 2021-2022 as Compared to 2017-2020*

Regional Health Command - Atlantic (RHC-A)



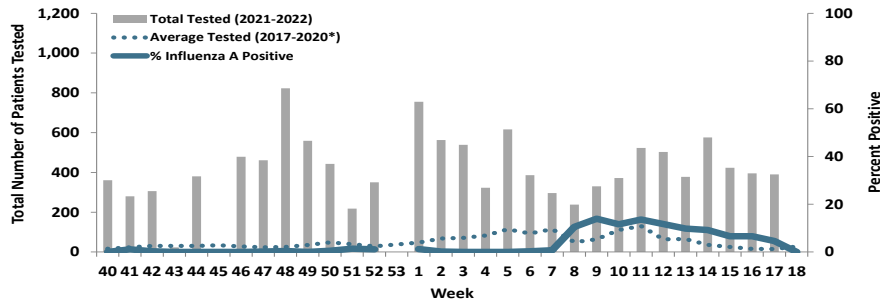
Week 18			
Age Group	AD	Non-AD	Season Total
< 18	0	25	403
18-29	15	5	530
30-39	8	3	152
40-49	1	1	49
50-59	1	1	34
60+	0	0	35
Total	25	35	1,203

Regional Health Command - Central (RHC-C)



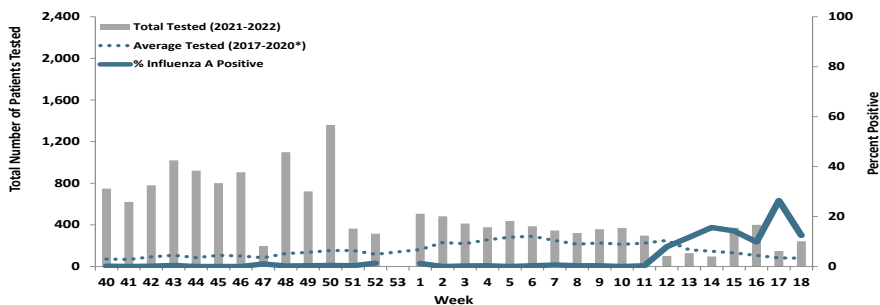
Week 18			
Age Group	AD	Non-AD	Season Total
< 18	0	15	444
18-29	36	5	591
30-39	13	2	213
40-49	2	0	65
50-59	0	3	44
60+	0	3	69
Total	51	28	1,426

Regional Health Command - Europe (RHC-E)



Week 18			
Age Group	AD	Non-AD	Season Total
< 18	0	0	70
18-29	0	0	282
30-39	0	0	56
40-49	0	0	17
50-59	0	0	7
60+	0	0	4
Total	0	0	436

Regional Health Command - Pacific (RHC-P)



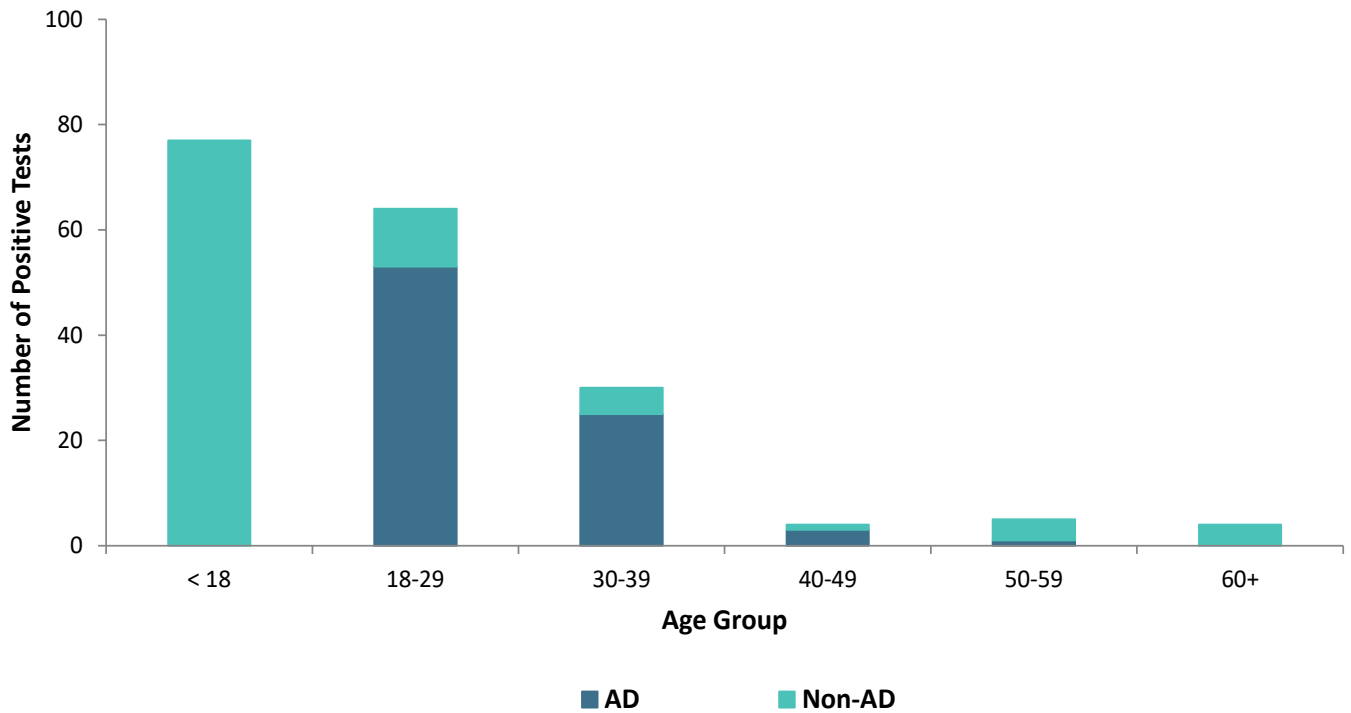
Week 18			
Age Group	AD	Non-AD	Season Total
< 18	0	0	1
18-29	0	0	11
30-39	0	0	0
40-49	0	0	1
50-59	0	0	1
60+	0	0	3
Total	0	0	17

*2017/2018 influenza season - 2019/2020 influenza season. Data from the 2020-2021 influenza season are not included in the average tested calculation due to the unusually low incidence of influenza.

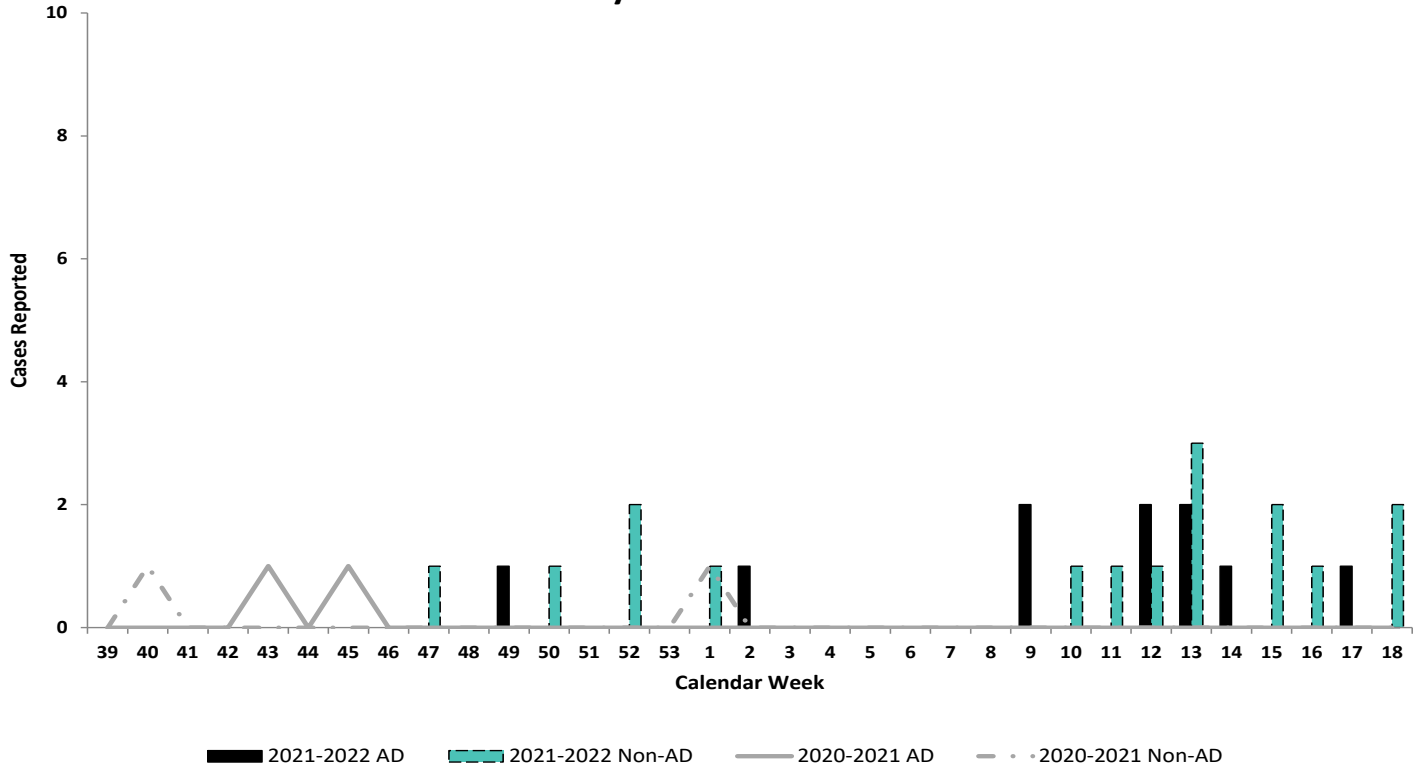
Number of Positive Influenza A Specimens by Region and Duty Status

Region	Week 15		Week 16		Week 17		Week 18	
	AD	Non-AD	AD	Non-AD	AD	Non-AD	AD	Non-AD
RHC-A	35	46	22	39	25	46	25	35
RHC-C	51	28	37	59	48	34	51	28
RHC-E	17	11	13	13	13	5	0	0
RHC-P	1	0	1	2	0	1	0	0

Positive Respiratory Specimen Results from Army MTFs by Age Group and Beneficiary Status, Week 18



Army Influenza-Associated Hospitalizations Reported in DRSi by Onset Week

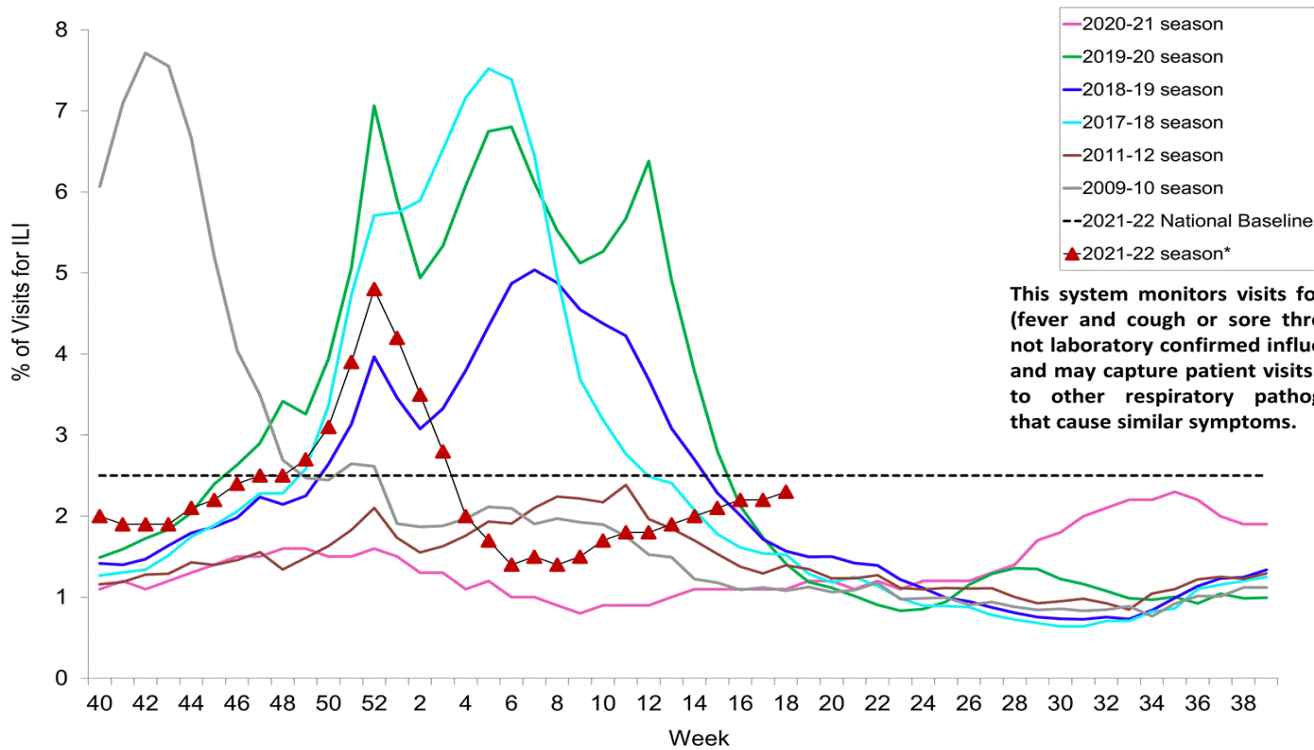


U.S. Army Public Health Center

Army Influenza Activity Report

Week ending 07 May 2022 (Week 18)

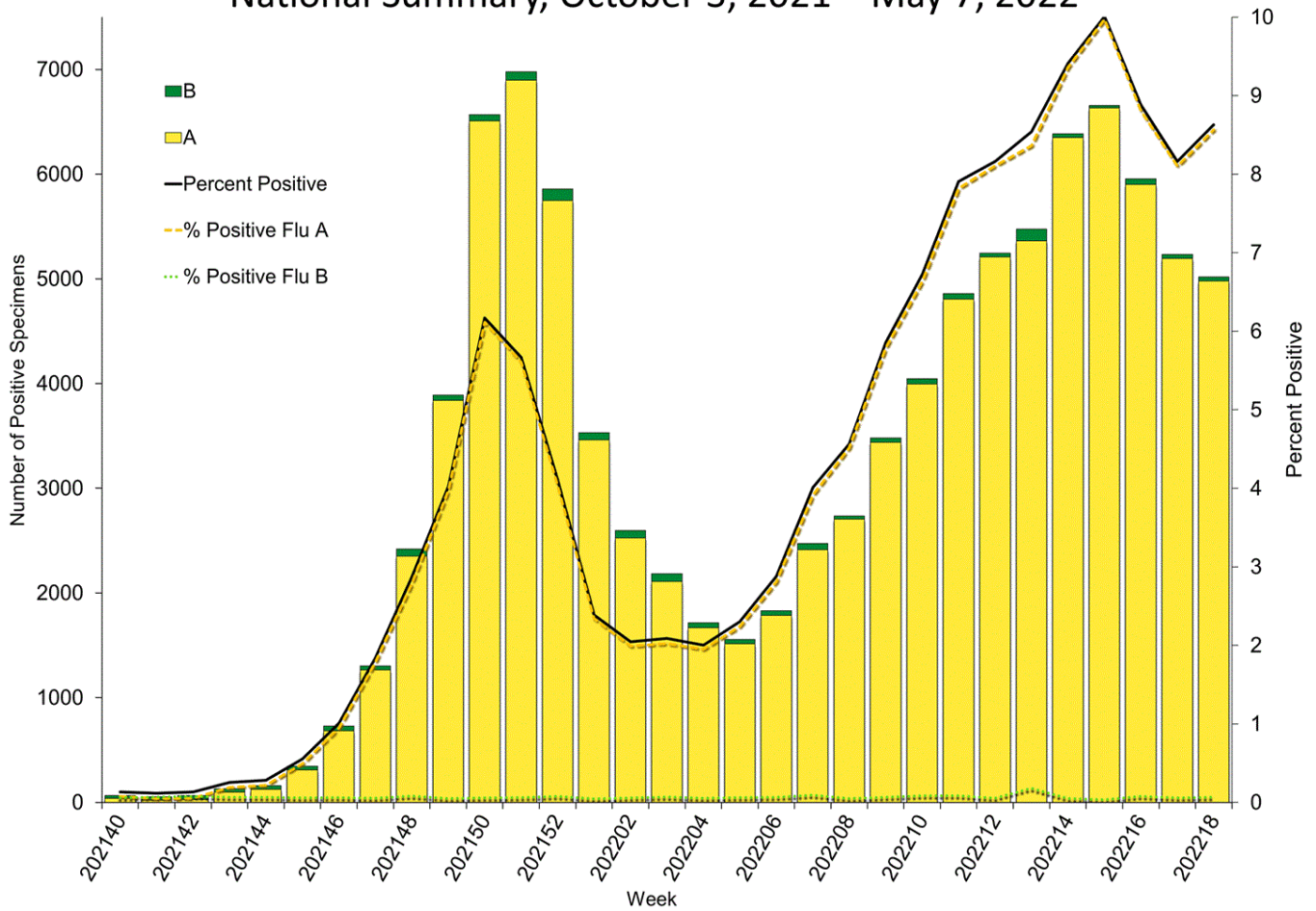
Percentage of Outpatient Visits for Respiratory Illness Reported By The U.S. Outpatient Influenza-like Illness Surveillance Network (ILINet), Weekly National Summary, 2021-2022* and Selected Previous Seasons



This system monitors visits for ILI (fever and cough or sore throat), not laboratory confirmed influenza and may capture patient visits due to other respiratory pathogens that cause similar symptoms.

Source: Centers for Disease Control and Prevention (CDC)

Influenza Positive Tests Reported to CDC by U.S. Clinical Laboratories, National Summary, October 3, 2021 – May 7, 2022



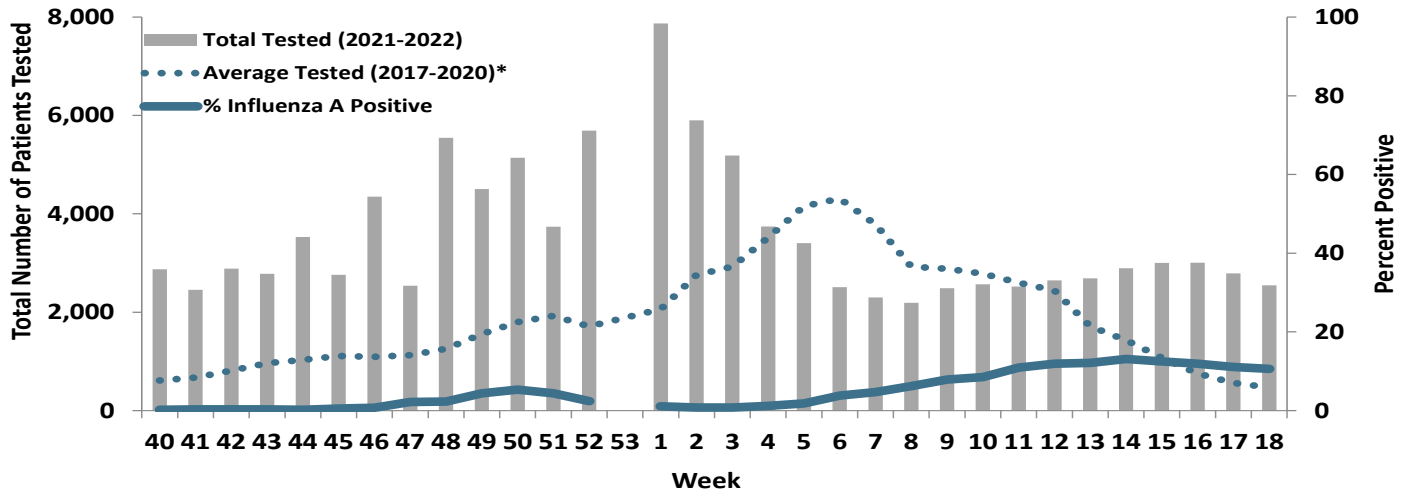
Source: Centers for Disease Control and Prevention (CDC)

U.S. Army Public Health Center

Army Influenza Activity Report

Week ending 07 May 2022 (Week 18)

Proportion of Positive Influenza A Specimens for U.S. Army 2021-2022



*2017/2018 influenza season - 2019/2020 influenza season. Data from the 2020-2021 influenza season are not included in the average tested calculation due to the unusually low incidence of influenza.